

**The Great Grid Upgrade**

Sea Link

# Sea Link

## Volume 2: Plans and Drawings

### Document 2.14.3: Indicative General Arrangements Plans - Offshore

Planning Inspectorate Reference: EN020026

Version: A Version 2, change request  
November 2025

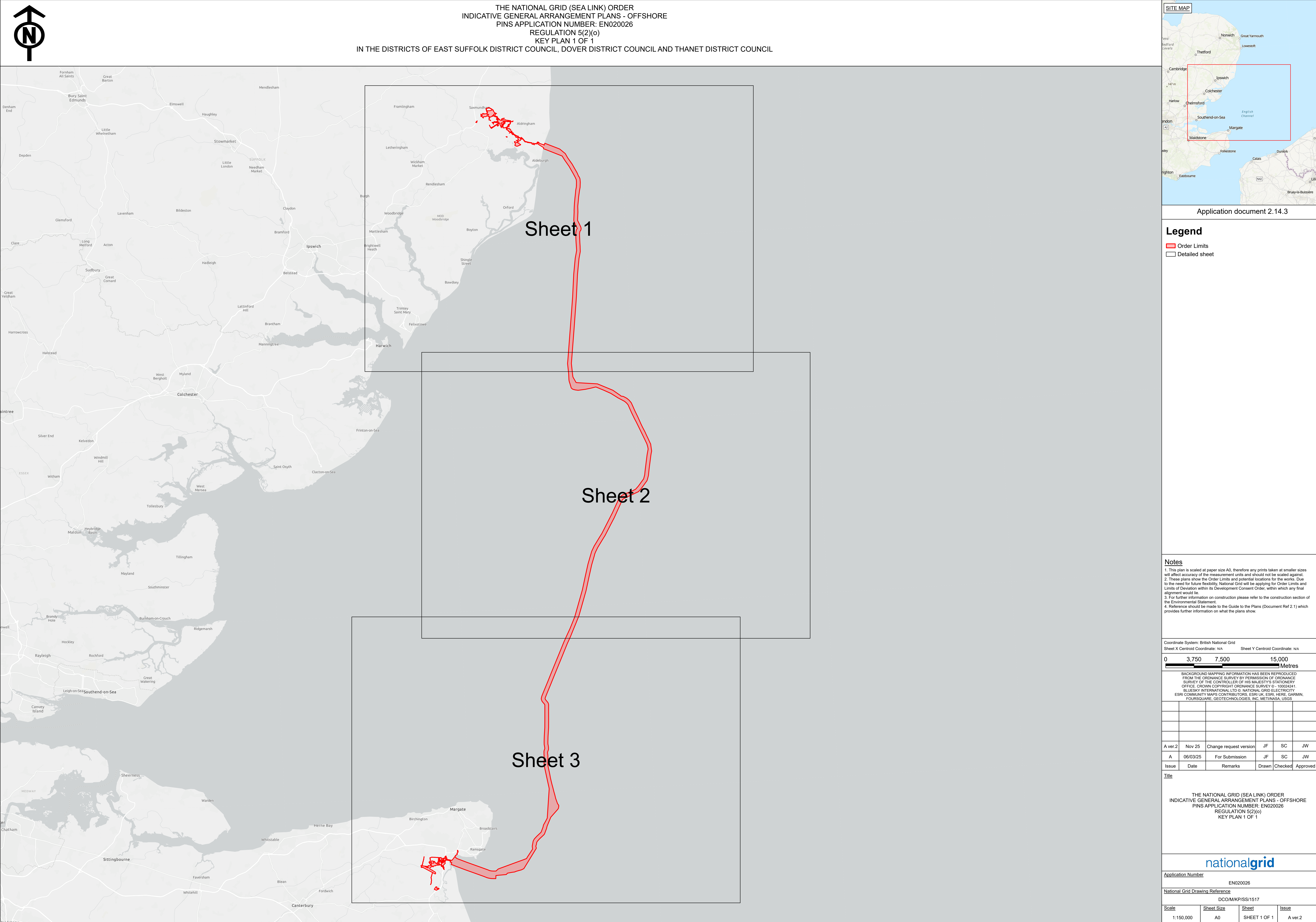
Infrastructure Planning (Applications: Prescribed Forms and Procedure)  
Regulations 2009 Regulation 5(2)(o)

nationalgrid

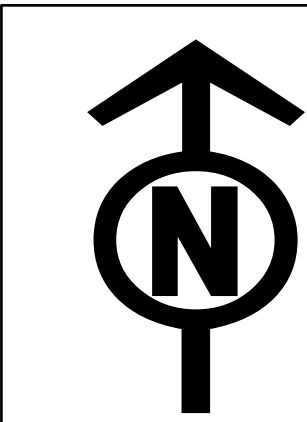


**Page intentionally left blank**

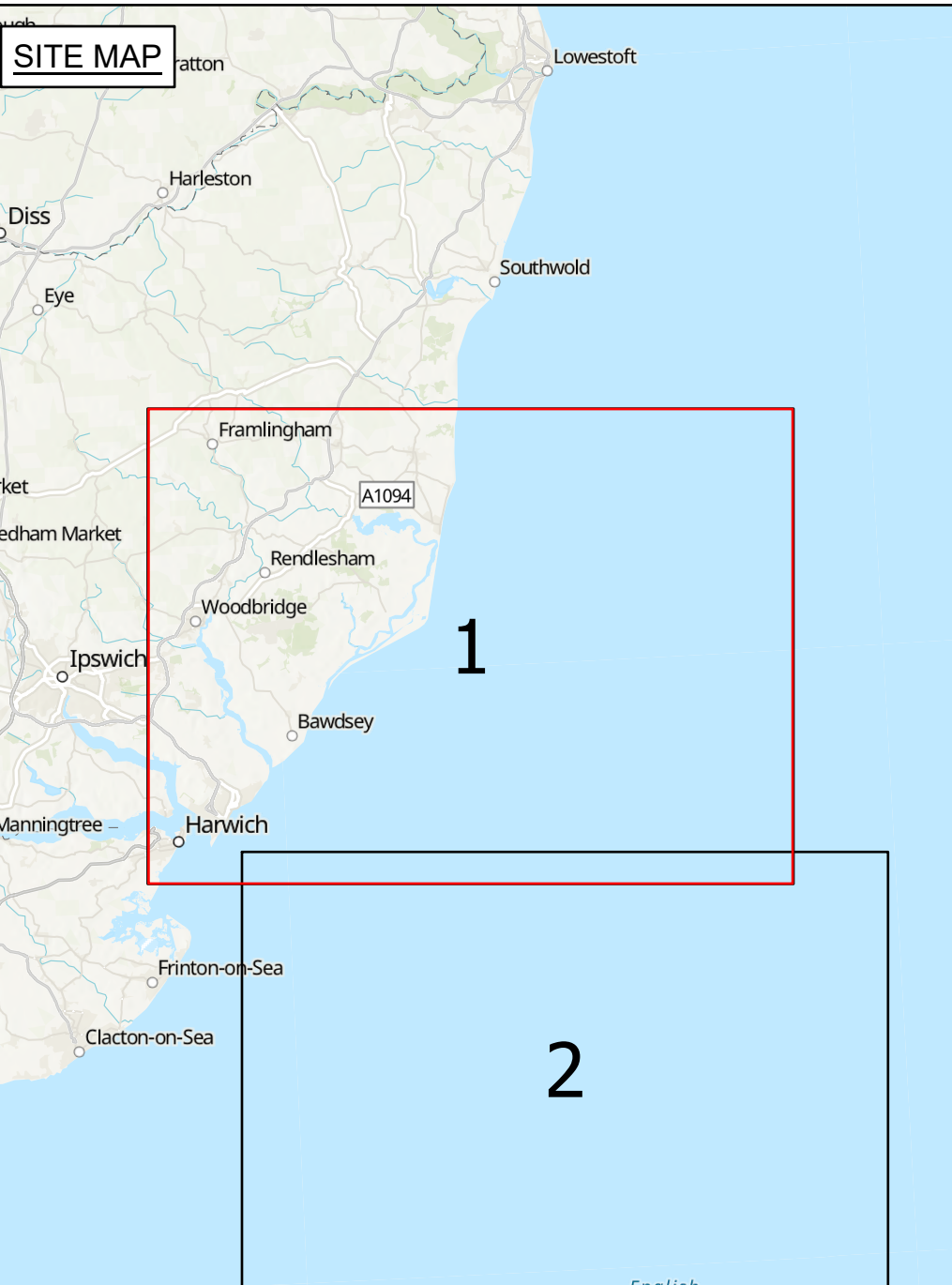
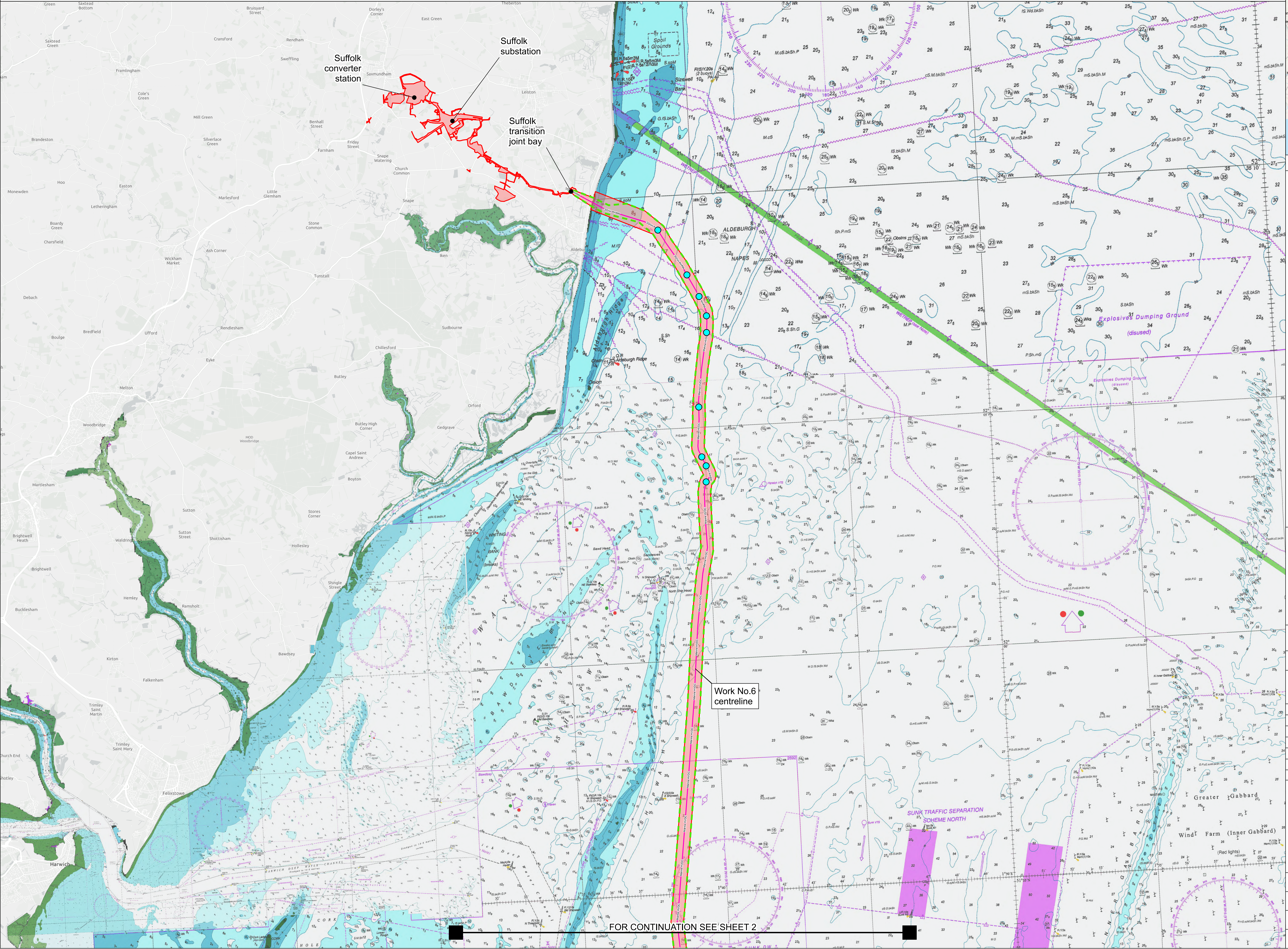








THE NATIONAL GRID (SEA LINK) ORDER  
INDICATIVE GENERAL ARRANGEMENT PLANS - OFFSHORE  
PINS APPLICATION NUMBER: EN020026  
REGULATION 5(2)(o)  
SHEET 1 OF 3  
IN THE DISTRICT OF EAST SUFFOLK DISTRICT COUNCIL



Application document 2.14.3

- Legend**
- Order Limits
  - Crossing point
  - Proposed marine High Voltage Direct Current (HVDC) cable alignment
  - Limit of deviation: High Voltage
  - Direct Current (HVDC) marine cables

- Notes**
- This plan is scaled at paper size A0, therefore any prints taken at smaller sizes will affect accuracy of the measurement units and should not be scaled against.
  - These plans show the Order Limits and potential locations for the works. Due to the need for future flexibility, National Grid will be applying for Order Limits and Limits of Deviation within its Development Consent Order, within which any final alignment would lie. Therefore the cable alignment, converter stations, substations and pylon locations should be treated as indicative only.
  - All areas within the Order Limits not identified as a Work No. are required for other elements of the authorised project as listed within Schedule 1.
  - Due to the narrow nature of some of the accesses, when not printed to scale, they appear as a single red line on these drawings, these are in fact parallel lines following the access route.
  - For further information on construction please refer to the construction section of the Environmental Statement.
  - Reference should be made to the Guide to the Plans (Document Ref 2.1) which provides further information on what the plans show.

Coordinate System: British National Grid  
Sheet X Centroid Coordinate: 648888.25 Sheet Y Centroid Coordinate: 247191.86  
A transformation from WGS 1984 to British National Grid coordinate system has been applied to marine basemapping.

0 1,250 2,500 5,000 Metres

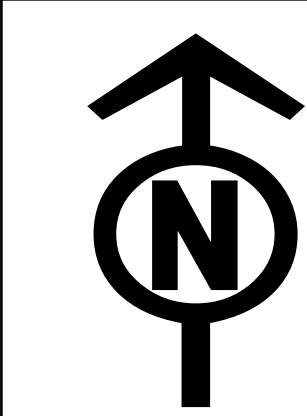
BACKGROUND MAPPING INFORMATION HAS BEEN REPRODUCED FROM THE UK HYDROGRAPHIC OFFICE  
© BRITISH CROWN AND OCEANWISE, 2025. ALL RIGHTS RESERVED. LICENSE NUMBER EMS-EX001-882114. NOT TO BE USED FOR NAVIGATION.  
© NATIONAL GRID ELECTRICITY

A ver.2	Nov 25	Change request version	JF	SC	JW
A	06/03/25	For Submission	JF	SC	JW
Issue	Date	Remarks	Drawn	Checked	Approved

THE NATIONAL GRID (SEA LINK) ORDER  
INDICATIVE GENERAL ARRANGEMENT PLANS - OFFSHORE  
PINS APPLICATION NUMBER: EN020026  
REGULATION 5(2)(o)  
SHEET 1 OF 3

nationalgrid			
Application Number			
EN020026			
National Grid Drawing Reference			
DCO/M/GA/PS/1514			
Scale	Sheet Size	Sheet	Issue
1:50,000	A0	SHEET 1 OF 3	A ver.2

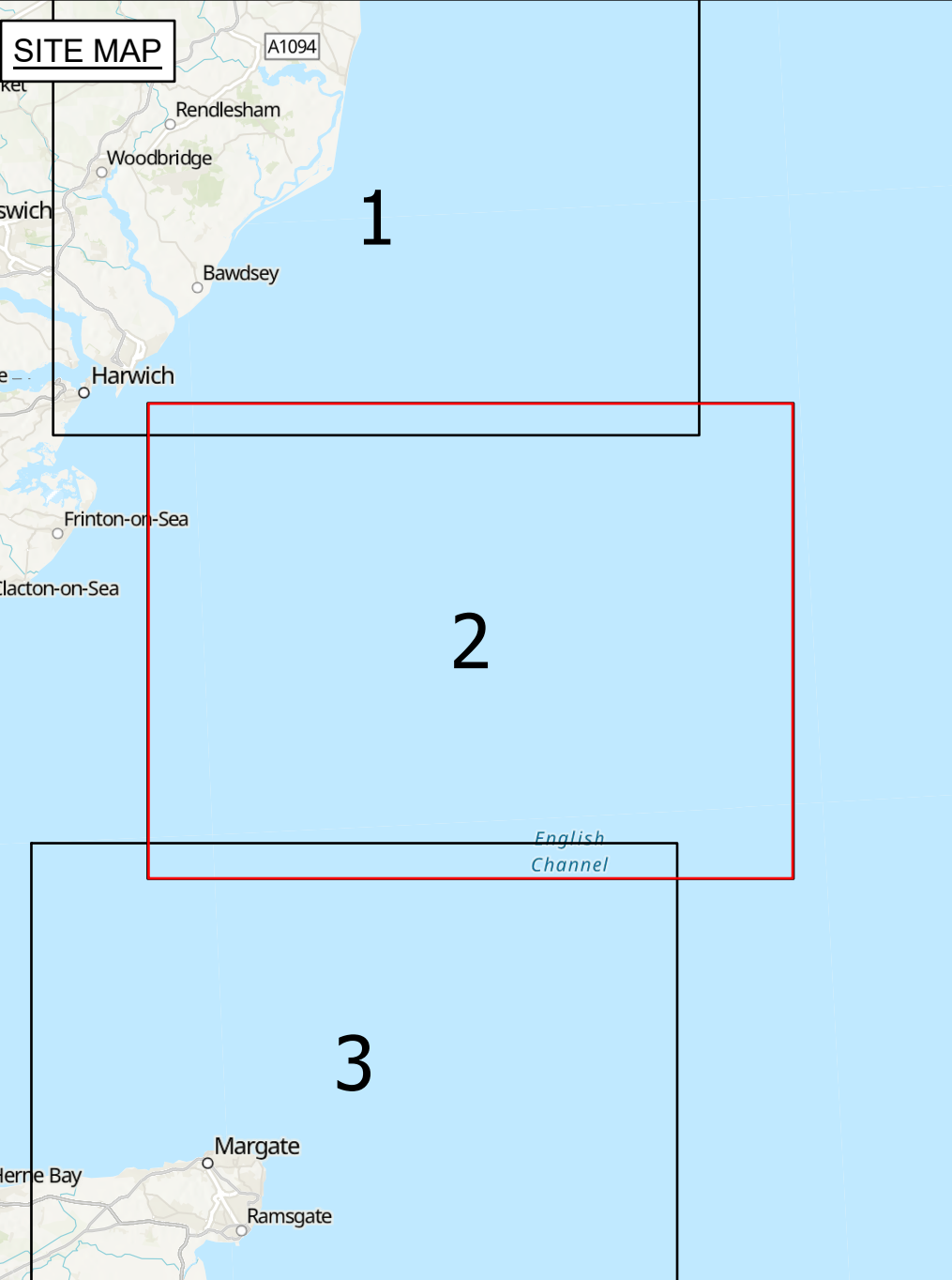




THE NATIONAL GRID (SEA LINK) ORDER  
INDICATIVE GENERAL ARRANGEMENT PLANS - OFFSHORE  
PINS APPLICATION NUMBER: EN020026  
REGULATION 5(2)(o)  
SHEET 2 OF 3

FOR CONTINUATION SEE SHEET 1

FOR CONTINUATION SEE SHEET 3



Application document 2.14.3

Legend

- Order Limits
- Crossing point
- Proposed marine High Voltage Direct Current (HVDC) cable alignment
- Limit of deviation: High Voltage
- Direct Current (HVDC) marine cables

Notes

- This plan is scaled at paper size A0, therefore any prints taken at smaller sizes will affect accuracy of the measurement units and should not be scaled against.
- These plans show the Order Limits and potential locations for the works. Due to the need for future flexibility, National Grid will be applying for Order Limits and Limits of Deviation within its Development Consent Order, within which any final alignment would lie. Therefore the cable alignment, converter stations, substations and pylon locations should be treated as indicative only.
- All areas within the Order Limits not identified as a Work No. are required for other elements of the authorised project as listed within Schedule 1.
- Due to the narrow nature of some of the accesses, when not printed to scale, they appear as a single red line on these drawings, these are in fact parallel lines following the access route.
- For further information on construction please refer to the construction section of the Environmental Statement.
- Reference should be made to the Guide to the Plans (Document Ref 2.1) which provides further information on what the plans show.

Coordinate System: British National Grid  
Sheet X Centroid Coordinate: 656416.31 Sheet Y Centroid Coordinate: 211918.8  
A transformation from WGS 1984 to British National Grid coordinate system has been applied to marine basemapping.

BACKGROUND MAPPING INFORMATION HAS BEEN REPRODUCED FROM THE UK HYDROGRAPHIC OFFICE  
© BRITISH CROWN AND OCEANWISE, 2025. ALL RIGHTS RESERVED. LICENSE NUMBER EMS-E001-882114. NOT TO BE USED FOR NAVIGATION.  
© NATIONAL GRID ELECTRICITY

Issue	Date	Remarks	Drawn	Checked	Approved
A	06/03/25	For Submission	JF	SC	JW

Title

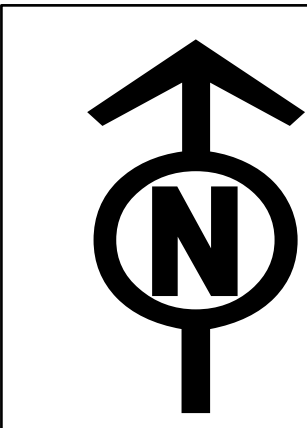
THE NATIONAL GRID (SEA LINK) ORDER  
INDICATIVE GENERAL ARRANGEMENT PLANS - OFFSHORE  
PINS APPLICATION NUMBER: EN020026  
REGULATION 5(2)(o)  
SHEET 2 OF 3

**nationalgrid**

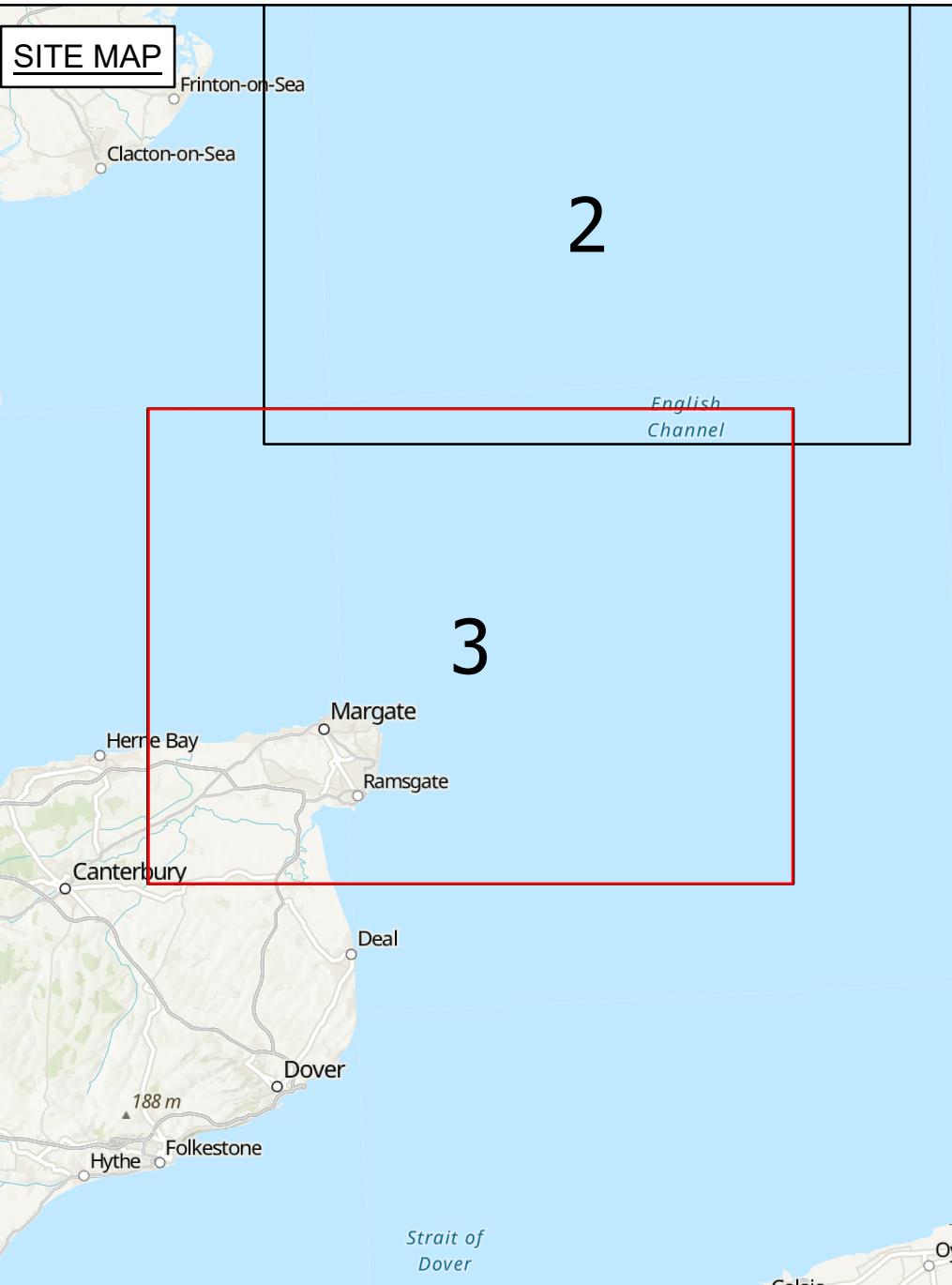
Application Number: EN020026  
National Grid Drawing Reference: DCOM/IGAPS/1515

Scale	Sheet Size	Sheet	Issue
1:50,000	A0	SHEET 2 OF 3	A







THE NATIONAL GRID (SEA LINK) ORDER  
INDICATIVE GENERAL ARRANGEMENT PLANS - OFFSHORE  
PINS APPLICATION NUMBER: EN020026  
REGULATION 5(2)(o)  
SHEET 3 OF 3  
IN THE DISTRICTS OF DOVER DISTRICT COUNCIL AND THANET DISTRICT COUNCIL



Application document 2.14.3

### Legend

-  Order Limits
-  Crossing point
-  Proposed marine High Voltage Direct Current (HVDC) cable alignment
-  Limit of deviation: High Voltage Direct Current (HVDC) marine cables

## Notes

1. This plan is scaled at paper size A0, therefore any prints taken at smaller sizes will affect accuracy of the measurement units and should not be scaled against.
2. These plans show the Order Limits and potential locations for the works. Due to the need for future development, the Order Limits are not shown as solid lines. Limits of Deviation within its Development Consent Order, within which any final alignment would lie. Therefore the cable alignment, converter stations, substations and pylon locations shown are not final.
3. All areas within the Order Limits not identified as 'Work No.' are required for other elements of the authorised project as listed within Schedule 1.
4. Due to the narrow nature of some of the accesses, when not printed to scale, a single red line on these drawings, these are in fact parallel lines following the access route.
5. For further information on construction please refer to the construction section of the Environmental Statements.
6. Reference should be made to the Guide to the Plans (Document Ref 2) which provides further information on what the plans show.

Coordinate System: British National Grid  
Sheet X Centroid Coordinate: 647163.31 Sheet Y Centroid Coordinate: 176934.84  
A transformation from WGS 1984 to British National Grid coordinate system has been applied to marine basemapping.



BACKGROUND MAPPING INFORMATION HAS BEEN REPRODUCED  
FROM THE UK HYDROGRAPHIC OFFICE.  
© BRITISH CROWN AND OCEANWIE, 2025. ALL RIGHTS  
RESERVED. LICENSE NUMBER EMS-EK001-862114. NOT TO  
BE USED FOR NAVIGATION.  
© NATIONAL GRID ELECTRICITY

A ver.2	Nov 25	Change request version	JF	SC	JW
A	06/03/25	For Submission	JF	SC	JW
Issue	Date	Remarks	Drawn	Checked	Approved

THE NATIONAL GRID (SEA LINK) ORDER  
INDICATIVE GENERAL ARRANGEMENT PLANS - OFFSHORE  
PINS APPLICATION NUMBER: EN020026  
REGULATION 5(2)(o)  
SHEET 3 OF 3

nationalgrid

Application Number  
EN020026

National Grid Drawing Reference

COPYRIGHT: NOT TO BE REPRODUCED WITHOUT THE WRITTEN PERMISSION OF NATIONAL GRID ELECTRICITY TRANSMISSION Plc